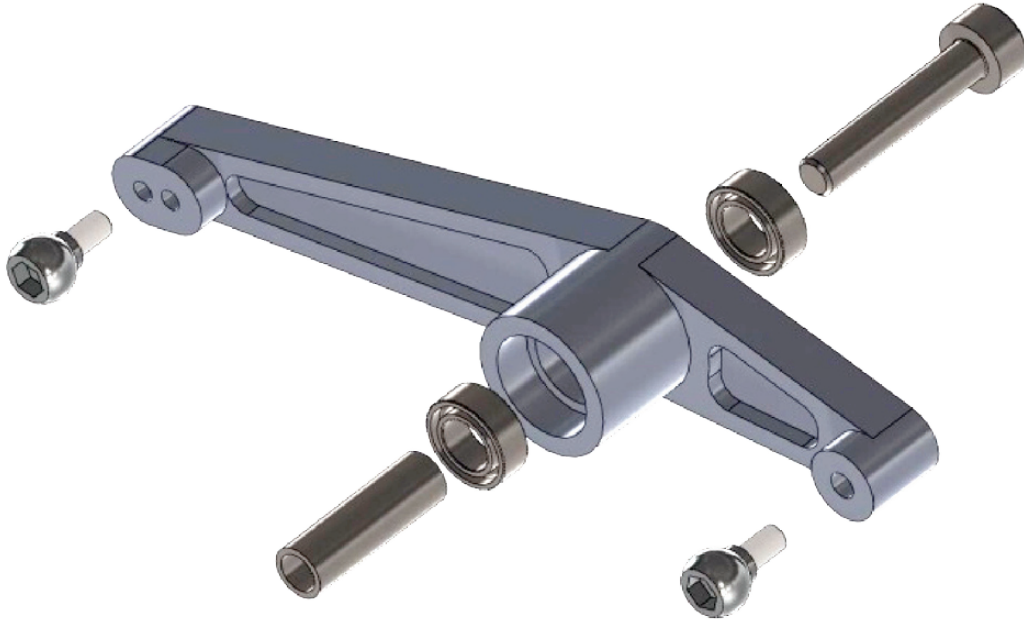


# EL601 Raptor 90 Aluminum Mixing Lever Instructions



**Note: Add blue Loctite to all screw threads when assembling.**

Add a **small** amount of blue or green Loctite to the bearing pockets using a cotton swab before inserting the bearings. If you cannot press the bearings into the lever by hand warm the lever with a hair dryer, heat gun, or low temperature oven. Avoid pounding the bearings in as this could damage them.

**ELEVATED RC**